



HEARTWOOD
HOMES

Harness Way, St. Albans, AL4 9HA

Guide Price £450,000

🛏️ 2 🚿 1 🚗 1

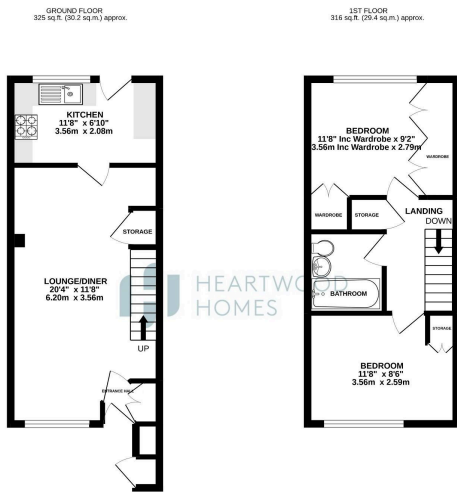


This delightful home is located in a serene cul-de-sac in the highly sought-after Jersey Farm area. Perfect for families, it offers a tranquil setting while being conveniently close to local amenities and schools.

The property offers well-proportioned accommodation, beginning with a welcoming canopy porch. This leads to a spacious living/ dining room, and at the rear, you'll find a fantastic kitchen that opens up to the rear garden. On the first floor, there are two generously sized bedrooms and an attractive modern bathroom.

Externally, the property features a well-groomed front garden. The rear boasts a landscaped garden with convenient rear access to a block-paved area, providing off-street parking.





TOTAL FLOOR AREA: 645 sq ft (59.9 sq m) approx.
Whilst every effort has been made to ensure the accuracy of the floorplan, Heartwood Homes, its agents and the developer accept no liability for any errors or omissions. The actual floorplan may vary from the floorplan shown on this website. The actual floorplan may vary from the floorplan shown on this website. The actual floorplan may vary from the floorplan shown on this website.

- Chain free
- Two bedroom home
- Modern fitted kitchen
- Close to sought after schooling
- Pleasant cul-de-sac location
- Off street parking
- Desirable Jersey Farm area
- EPC rating C

